

John Anson Ford Ampitheatre

2010 Lighting Rep Plot

Designed & Drawn by James Smith III

All drawings are as viewed from Center Stage

Lighting Positions Shown:

Front Of House (A)

House Towers

House R (B)

House L (J)

Ladders

Stage R (C)

Stage L (H)

Top Truss (K)

Garages

Stage R (D)

Stage L (G)

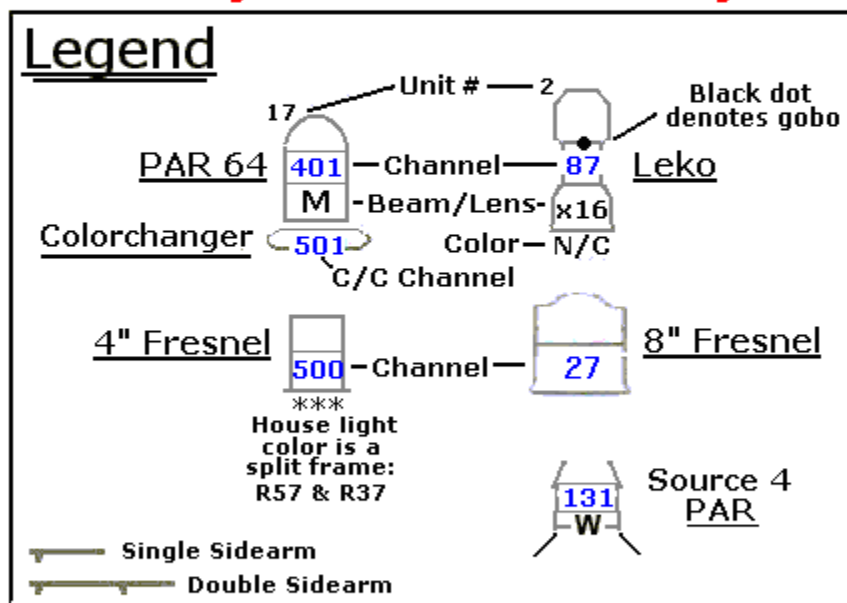
Ramparts

Stage R (E)

Stage L (F)

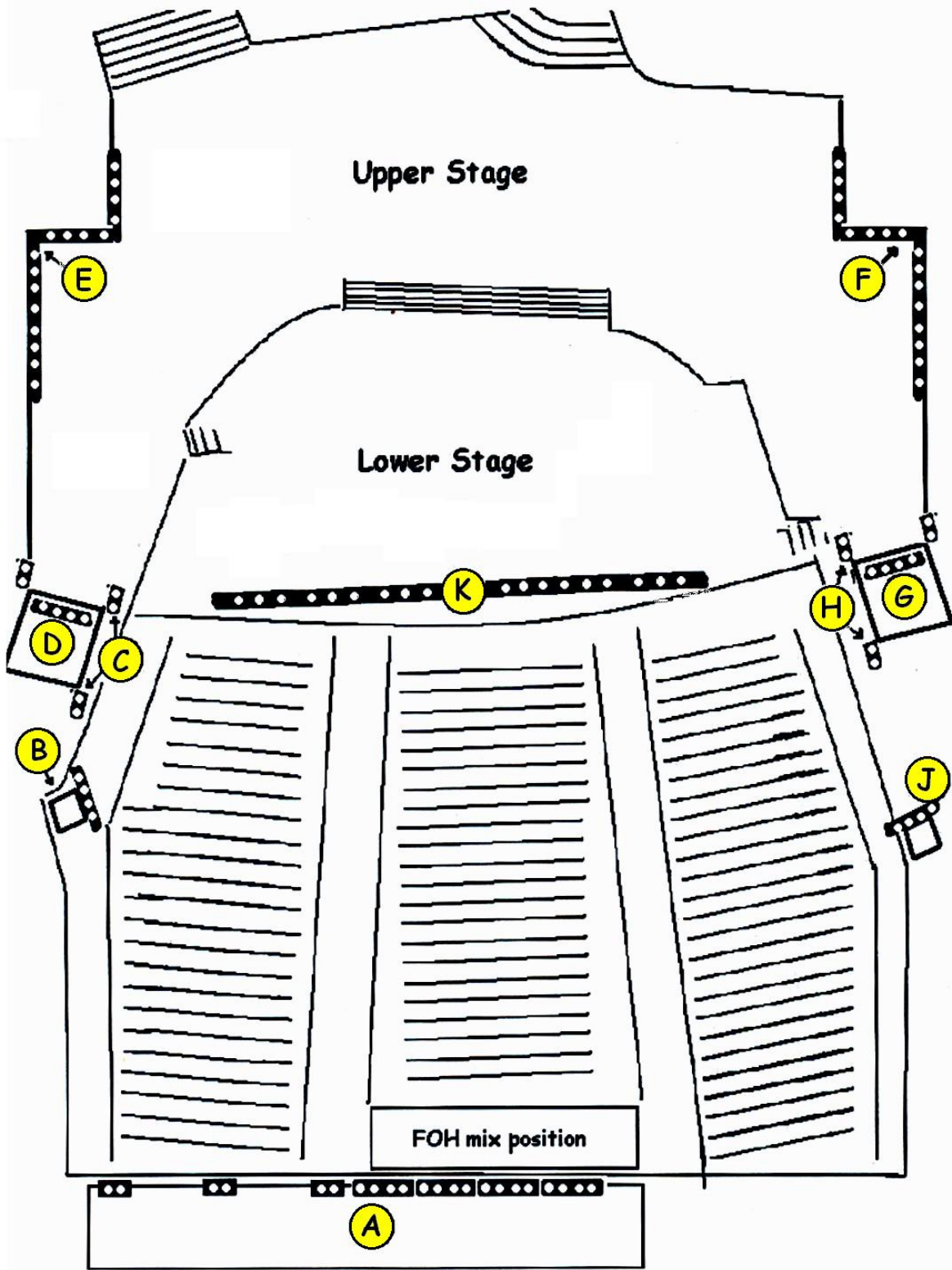
Floor (L)

Legend



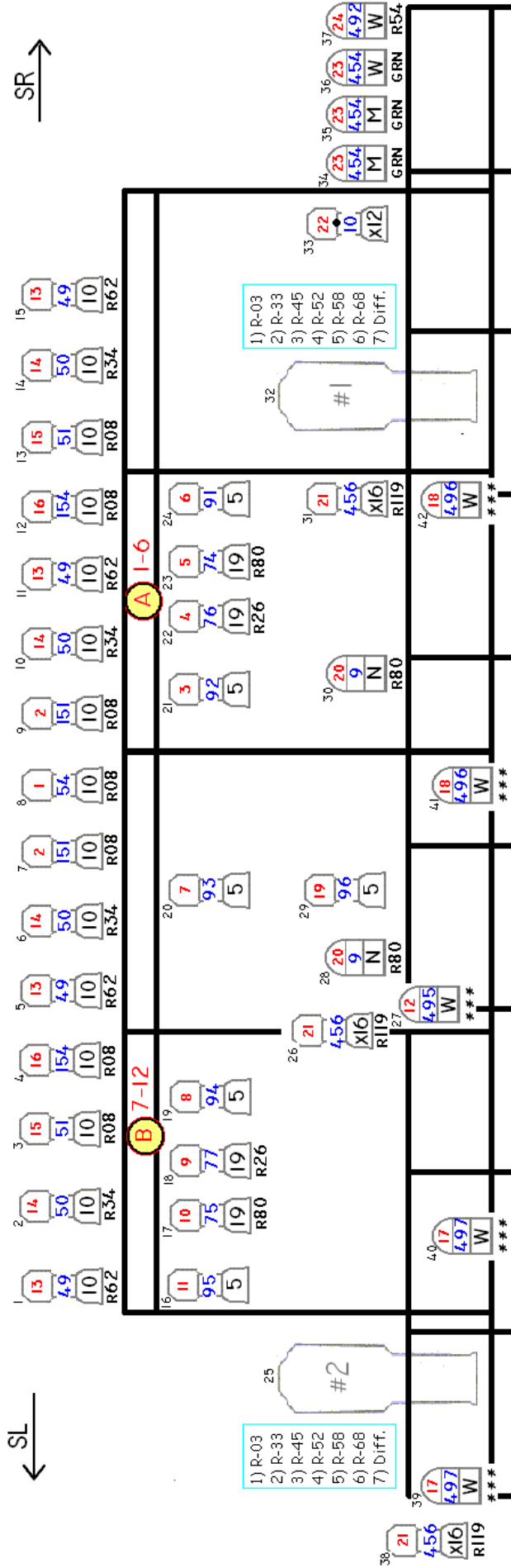
- A GREEN dot next to a fixture indicates a SPECIAL that is available to change as needed. •
- A RED dot indicates fixtures that cannot be changed. •

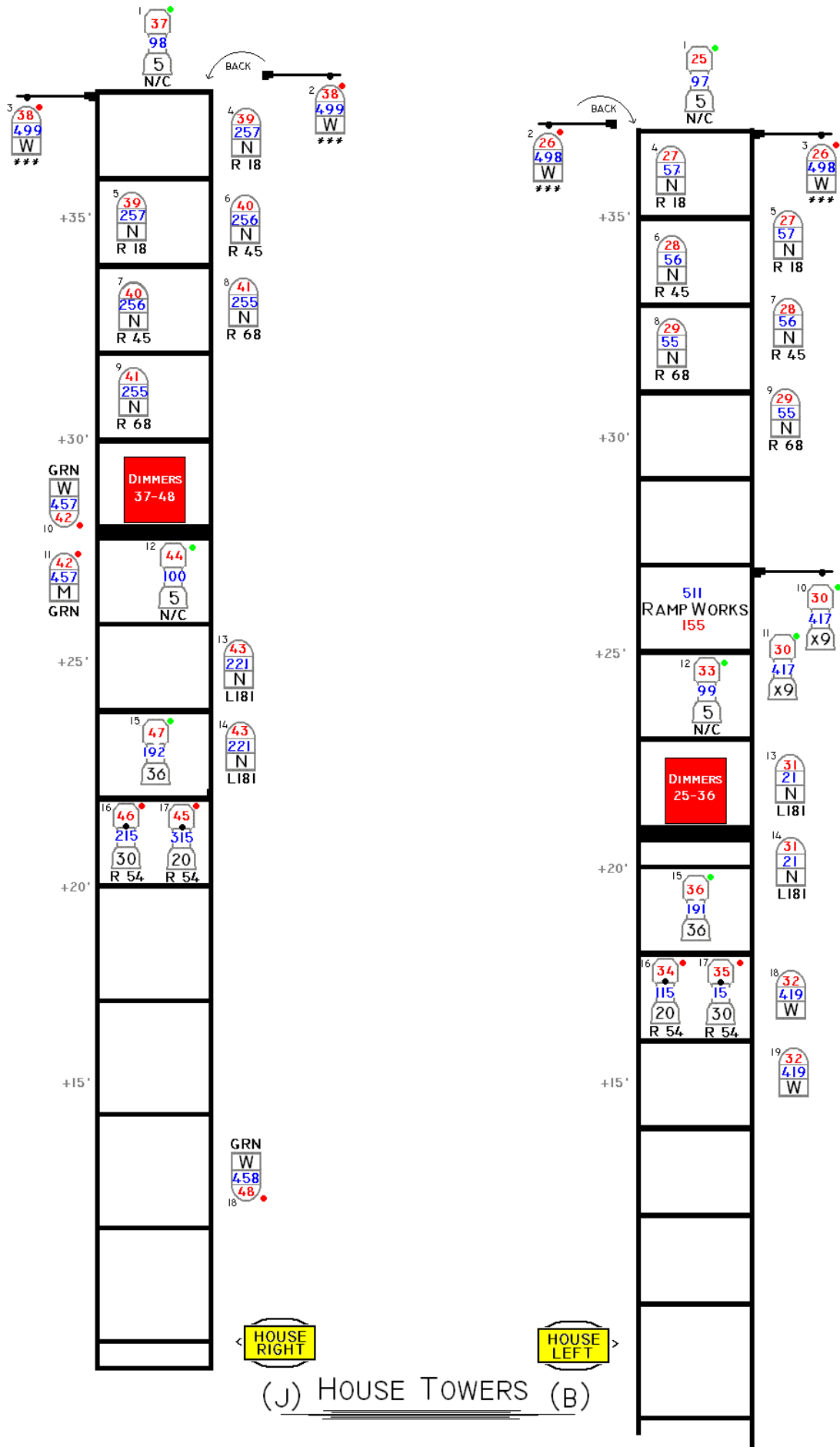
All other fixtures must be restored to house package, if changed.

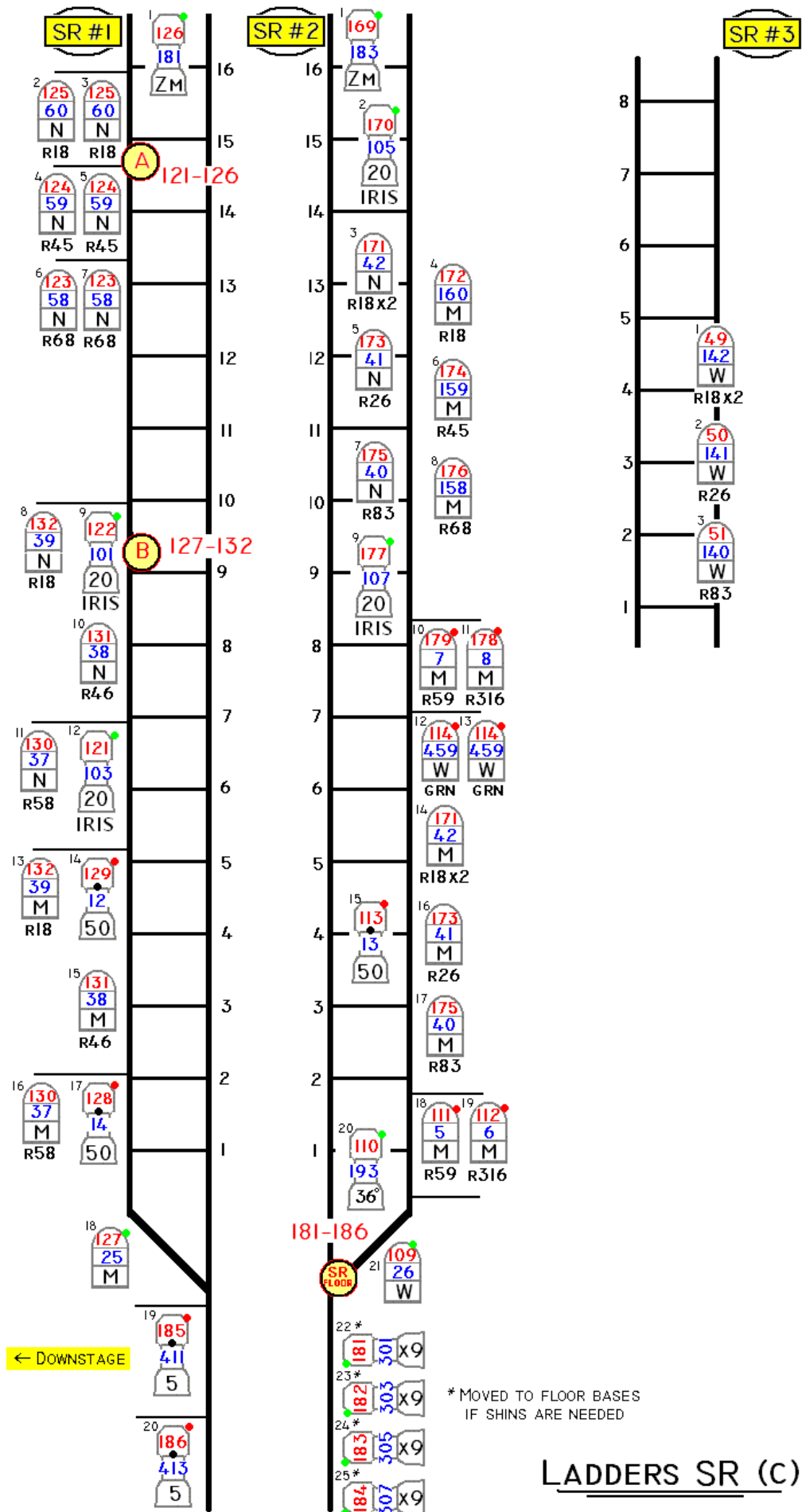


RI19

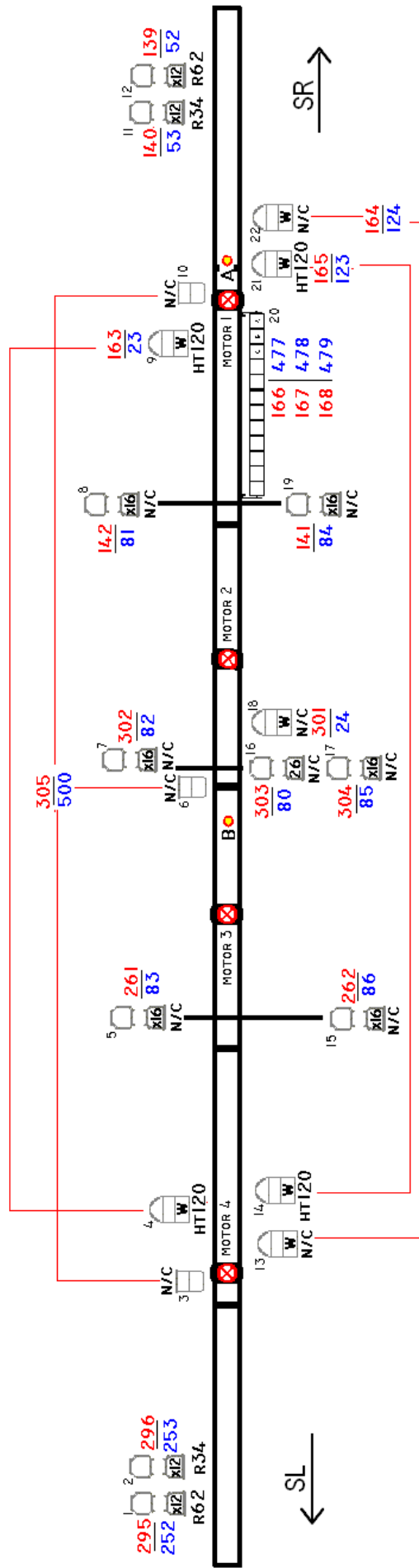
FRONT OF HOUSE (A)



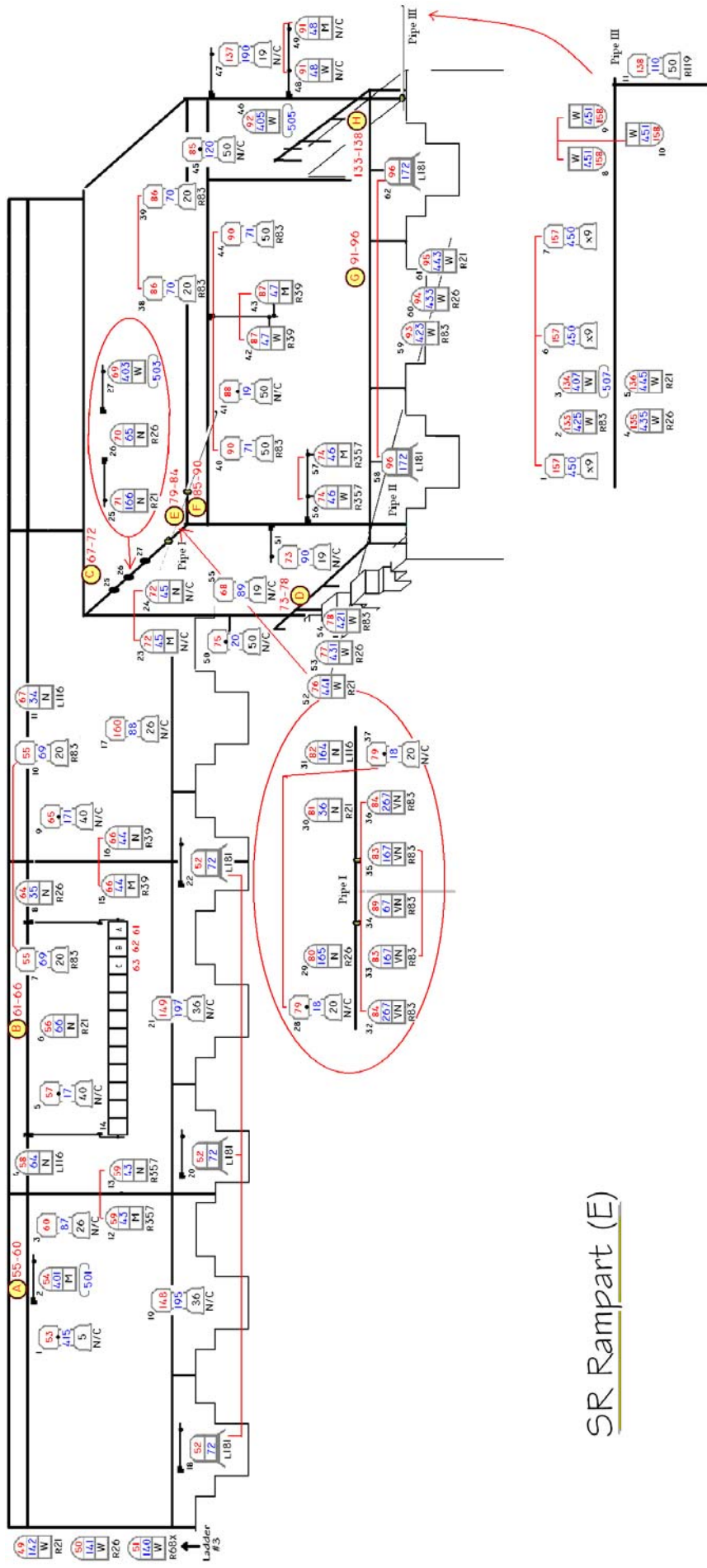




LADDERS SR (C)



TRUSS (K)



SR Rampart (E)

Colorchanger Info

Q 901	00 %	1	N/C	R 00
Q 902	09 %	2	Yellow	L 101
Q 903	21 %	3	Amber	L 104
Q 904	28 %	4	Red	L 106
Q 905	36 %	5	Mauve	L 126
Q 906	41 %	6	U/V	L 181
Q 907	48 %	7	Blue	L HT120
Q 908	55 %	8	Light Blue	L HT132
Q 909	61 %	9	Blue/Green	L 116
Q 910	68 %	10	Dark Lav	L 180
Q 911	73 %	11	Light Lav	L 170
Q 912	80 %	12	Hot Pink	L 113
Q 913	88 %	13	Light Pink	L 111
Q 914	FF %	14	N/C	R 00